

# ROAD INDEX

A	I	RADCLIFFE RD.	B1 F1
B	J	BASCOME RD.	F2, F4
		BRAKEMAN RD.	D1, D4
		BROWN RD.	B2, B4
C	K	CHARDON WINDSOR RD.	A6, D6
		CLARIDON TROY RD.	D6, E6
		CUTTS RD.	B4, B5
D	L	KILE RD.	G2, G6
E	M	TAYLORWELLS RD.	C6
F	N	VENUS RD.	E3, E4
G	O	WILLIAMS RD.	E1, E3
		WOODIN RD.	A4, D4
		WILLOW DR.	B3
		WILLOW LANE	D1
	P	OLD STATE RD.	B1, E6
	Q	GRANT ST.	A5, G4
		PEARL RD.	A2, C2
	R	HIGH COUNTRY DR.	E4
		HOLI DALE DR.	C5

- ① HAMBDEN ELEMENTARY SCHOOL
- ② HAMBDEN CONGREGATIONAL CH.
- ③ CHRISTIAN & MISSIONARY ALLIANCE CH.
- ④ HAMBDEN CEMETERY
- ⑤ HAMBDEN VOL. FIRE DEPT.
- ⑥ HAMBDEN TOWN HALL

## HAMBDEN TOWNSHIP

SCALE = 1" = 2000'  
 ROBERT E. PHILLIPS,  
 GEORGIA COUNTY ENGINEER

- UNPAVED ROAD
- PAVED ROAD
- TOWNSHIP LINE
- COUNTY LINE
- CORPORATION LINE

L A K E C O U N T Y

P. T. W. O. N. D. O. N. A. R. D. O. N. C. H. A. R. D. O. N.

RADCLIFFE ROAD

PARKER TRACT 12

PARKER TRACT 11

BOND TRACT 30

HAMB DEN TWP.

48.75 A  
13  
23 A  
44.75 A  
Geauga Co. Comm.  
431-877

241-81  
83.75 A  
L. Kempf

221-350  
552-231  
F.C. Zikursh

46.61 A  
H. & M. Crowley  
571-147  
601-983  
603-208

552-650  
10 A  
R. J. M. Giffels  
571-1282  
R. C. Garbre  
611-506  
611-508

206-122  
51.69 A  
E. Covert  
J. E. J. Grant  
679-1170  
33 A

47.57 A  
M. W. Hazen  
578-1324  
16.13 A  
12.10 A  
135-406  
15 A  
13.96 A

609-512  
M. Veith  
G. W. Sangrik  
578-1324  
18.13 A  
14.13 A  
15 A  
13.96 A

234-138  
582-670  
10 A  
A. W. Ireland  
65.72 A  
A. G. Buschmann  
581-79  
373-301  
672-422  
56.53 A  
A. B. Stevenson  
243-547  
56 A  
H. & F. Phillips

251-397  
68.50 A  
E. M. Lerd  
495-877 50 A  
W. E. L. Petro  
501-808  
25 A  
C. Camino  
635-684  
3.08 A  
25

27.95 A  
400-154  
27.95 A  
25 A  
Camite Const. Inc.  
505-717, 717

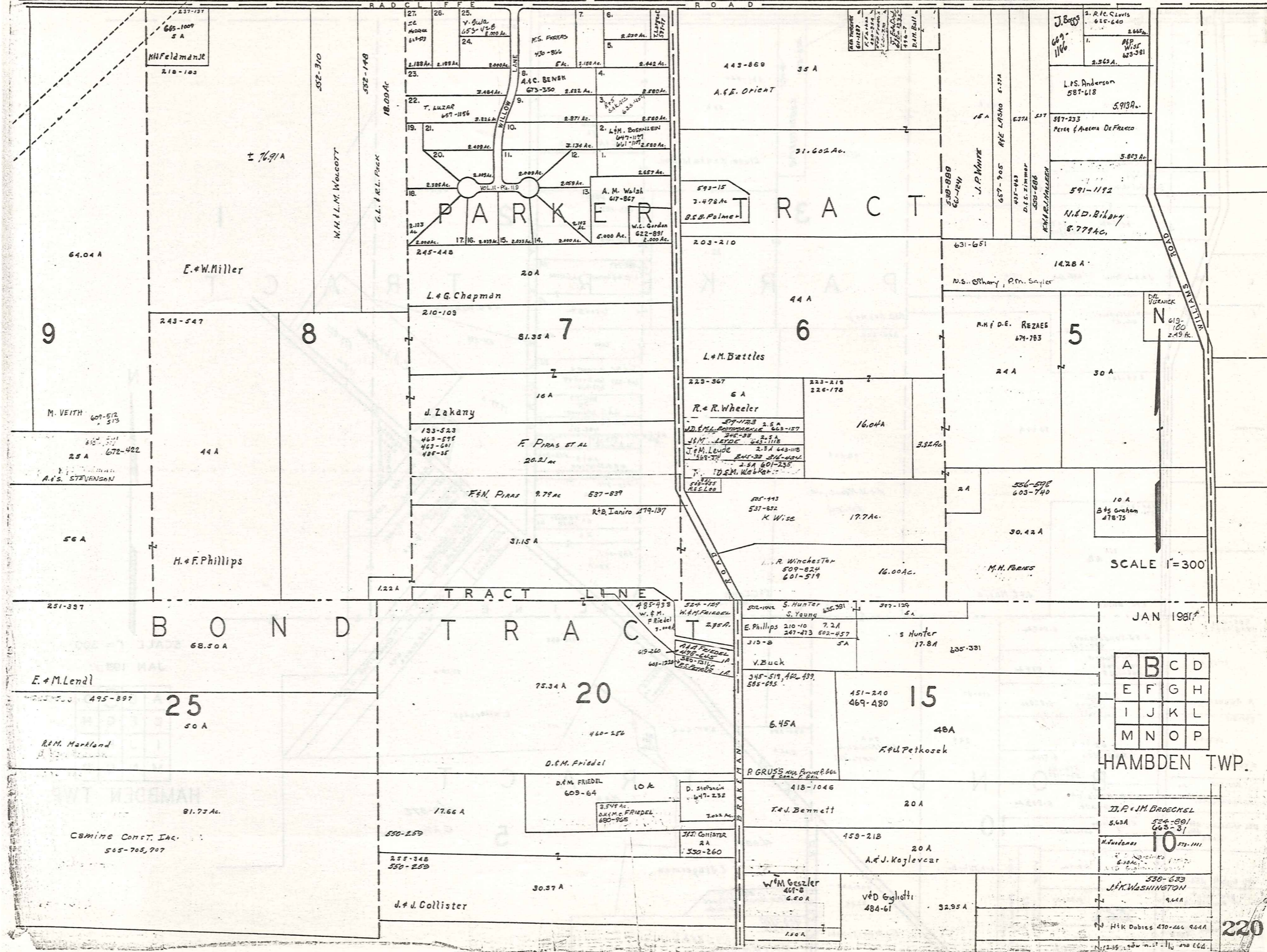


SCALE 1" = 300'

JAN 1984

A	B	C	D
E	F	G	H
I	J	K	L
M	N	O	P

L A K E C O U N T Y



P A R K E R T R A C T

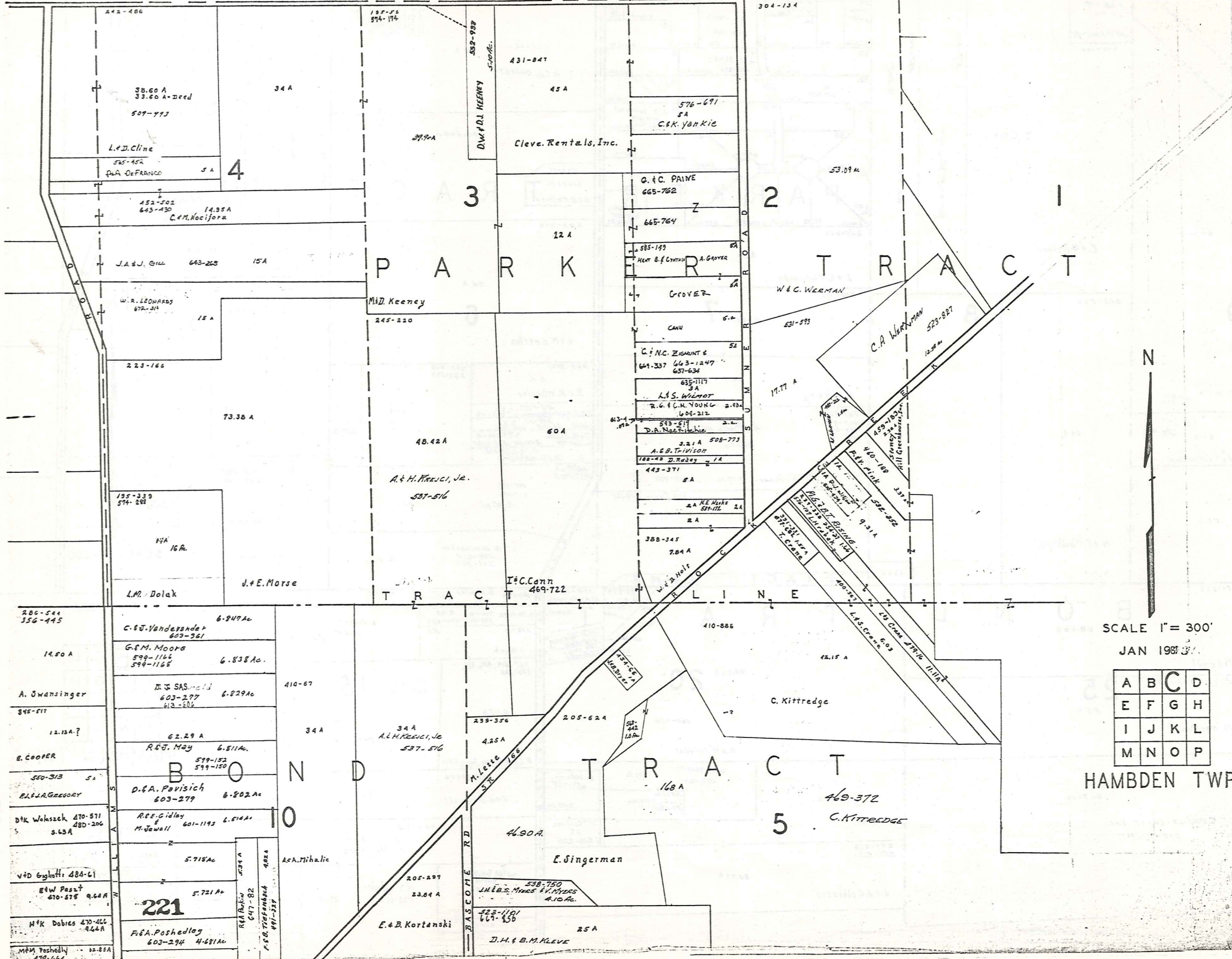
B O N D T R A C T

H A M B D E N T W P.

A	B	C	D
E	F	G	H
I	J	K	L
M	N	O	P

JAN 1987

L A K E C O U N T Y



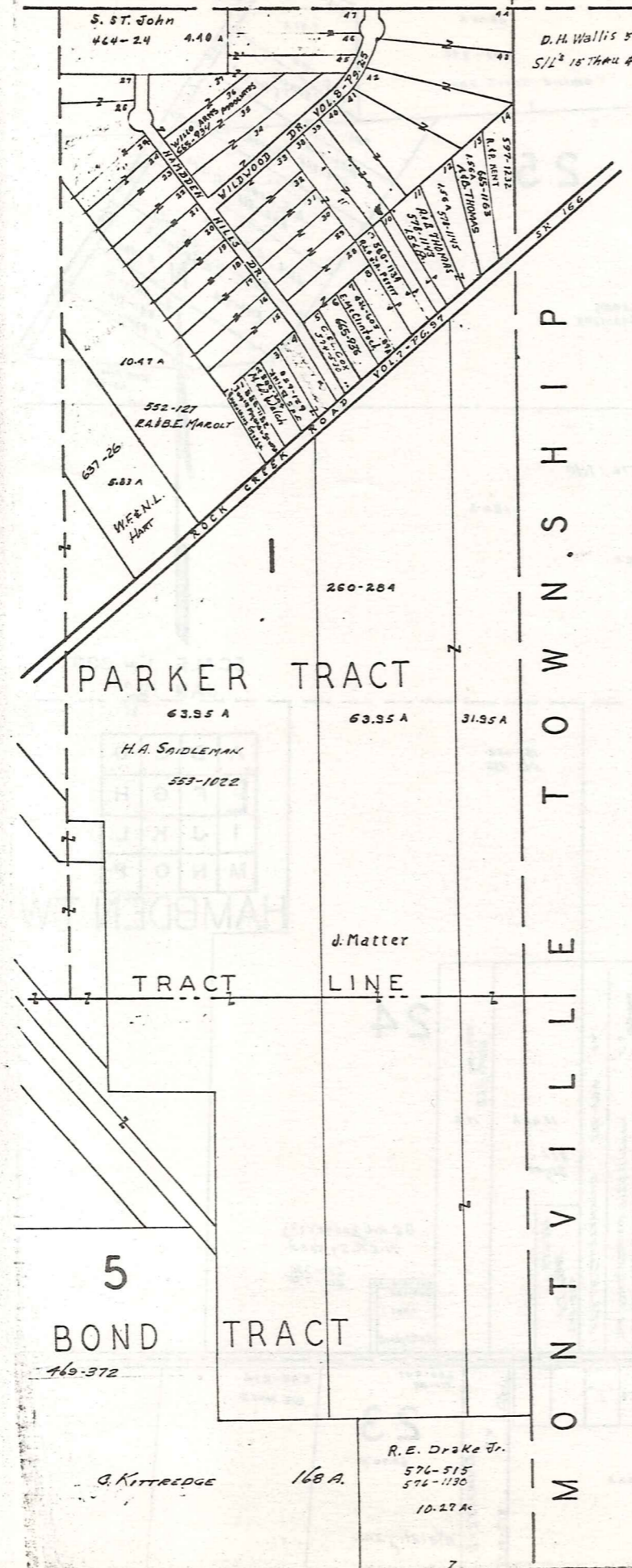
SCALE 1" = 300'  
 JAN 1983

A	B	C	D
E	F	G	H
I	J	K	L
M	N	O	P

HAMB DEN TWP.

LAKE COUNTY

THOMPSON TWP.



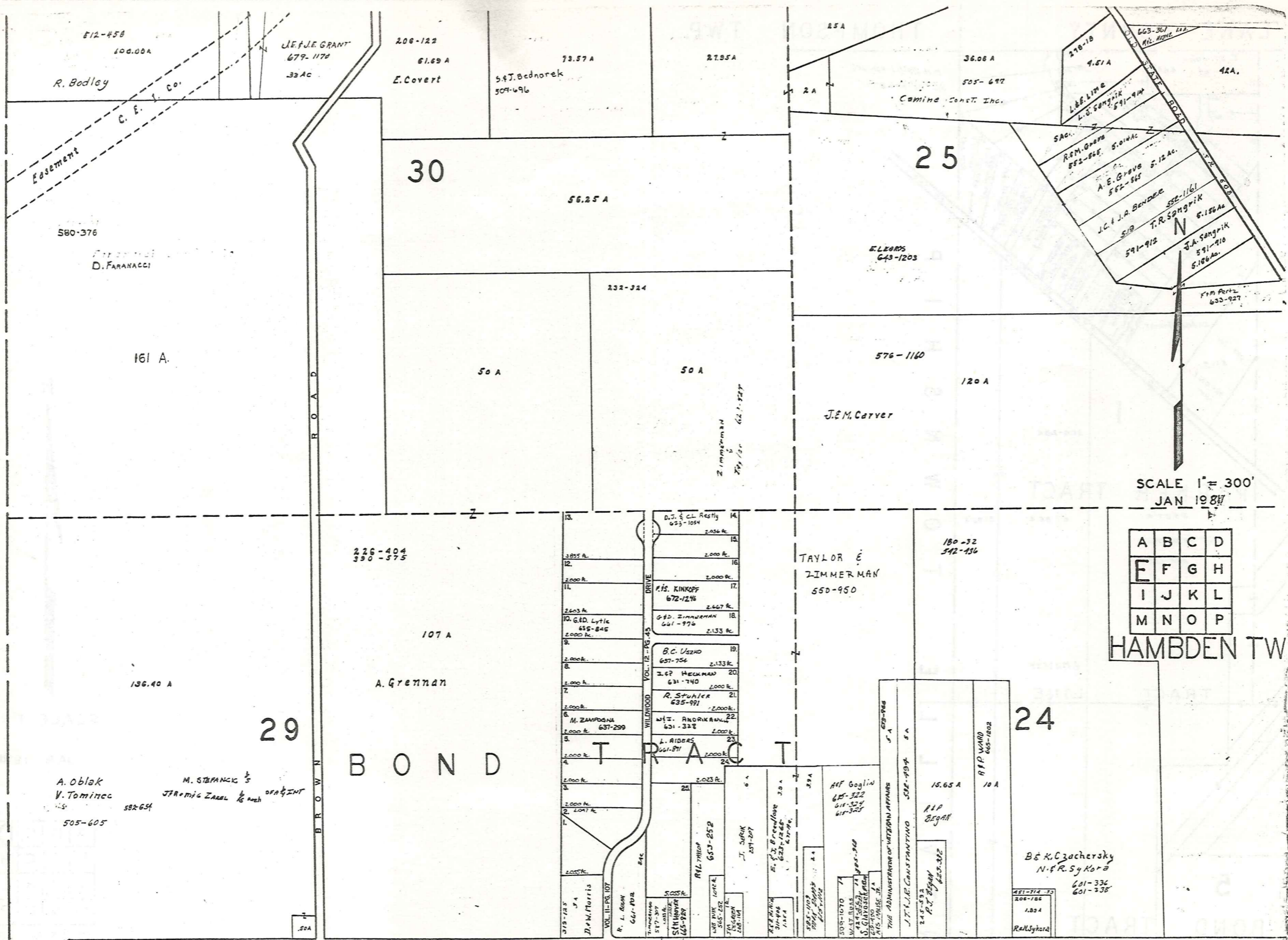
SCALE 1" = 300'

JAN 1982

A	B	C	D
E	F	G	H
I	J	K	L
M	N	O	P

HAMBDEN TWP.

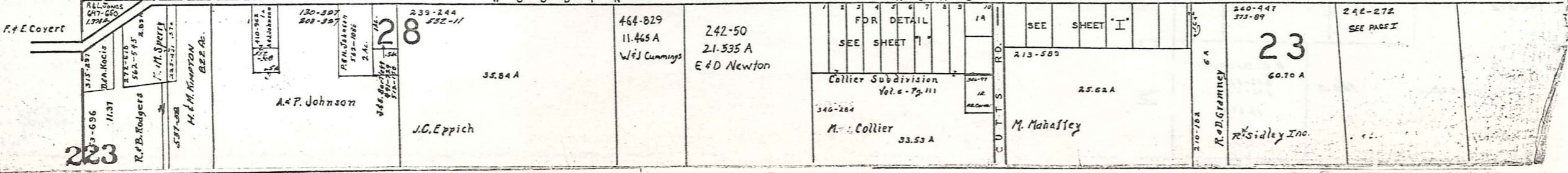
C H A R D O N T O W N S H I P



SCALE 1" = 300'  
JAN 19 87

A	B	C	D
E	F	G	H
I	J	K	L
M	N	O	P

HAMB DEN TW



223

28

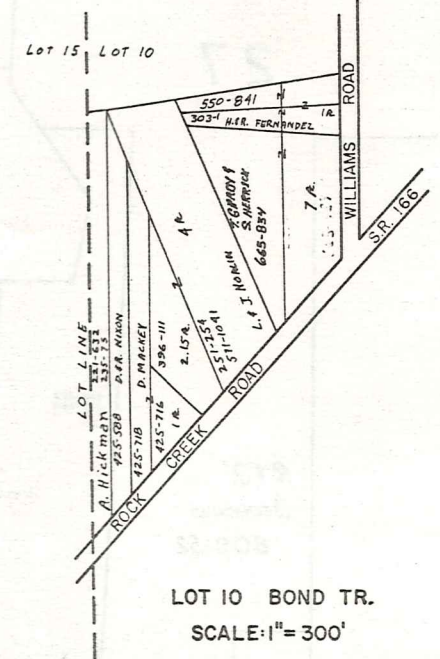
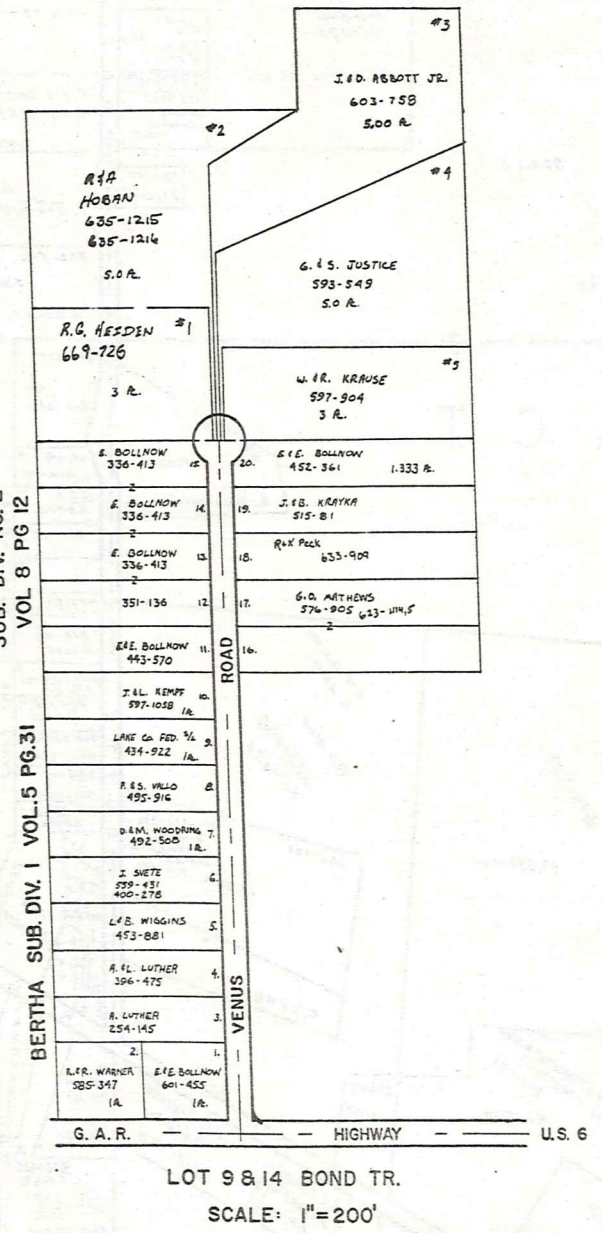
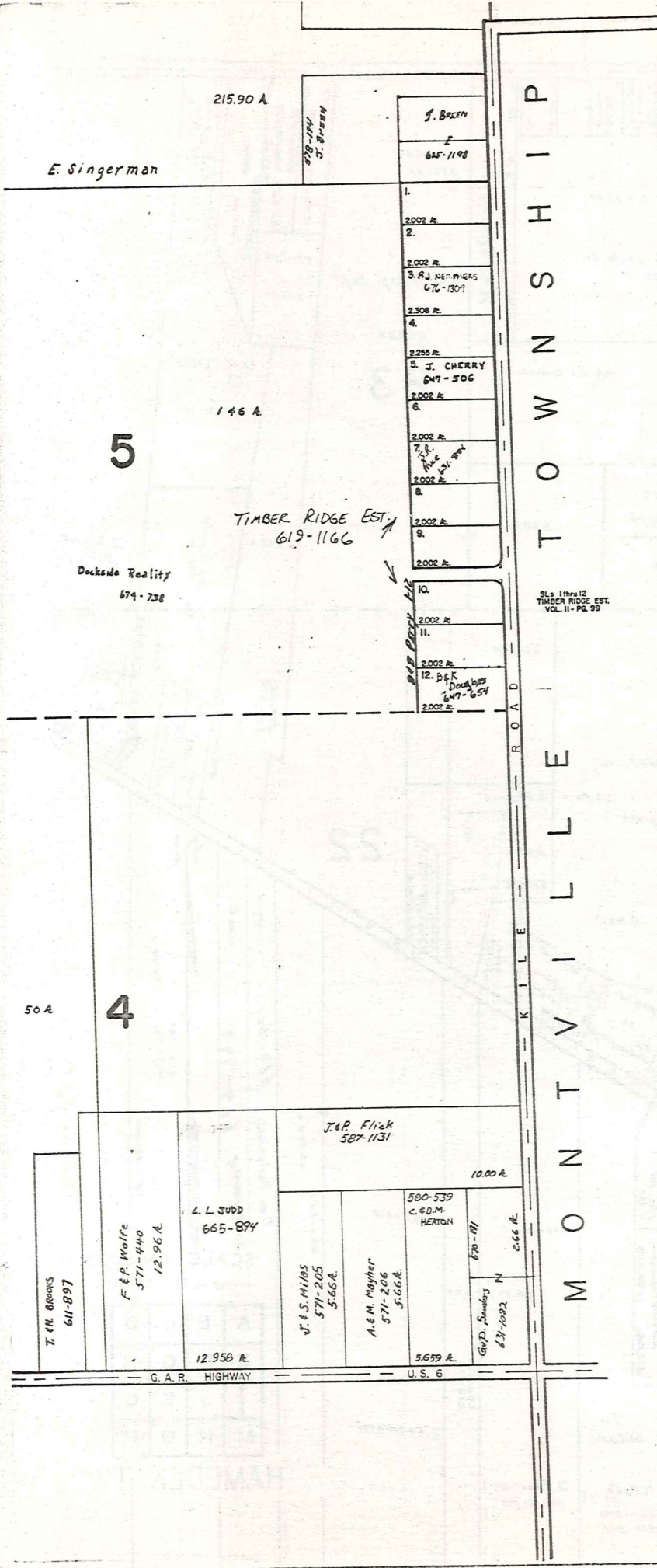
23

SEE SHEET I  
SEE SHEET II

SEE PAGE I





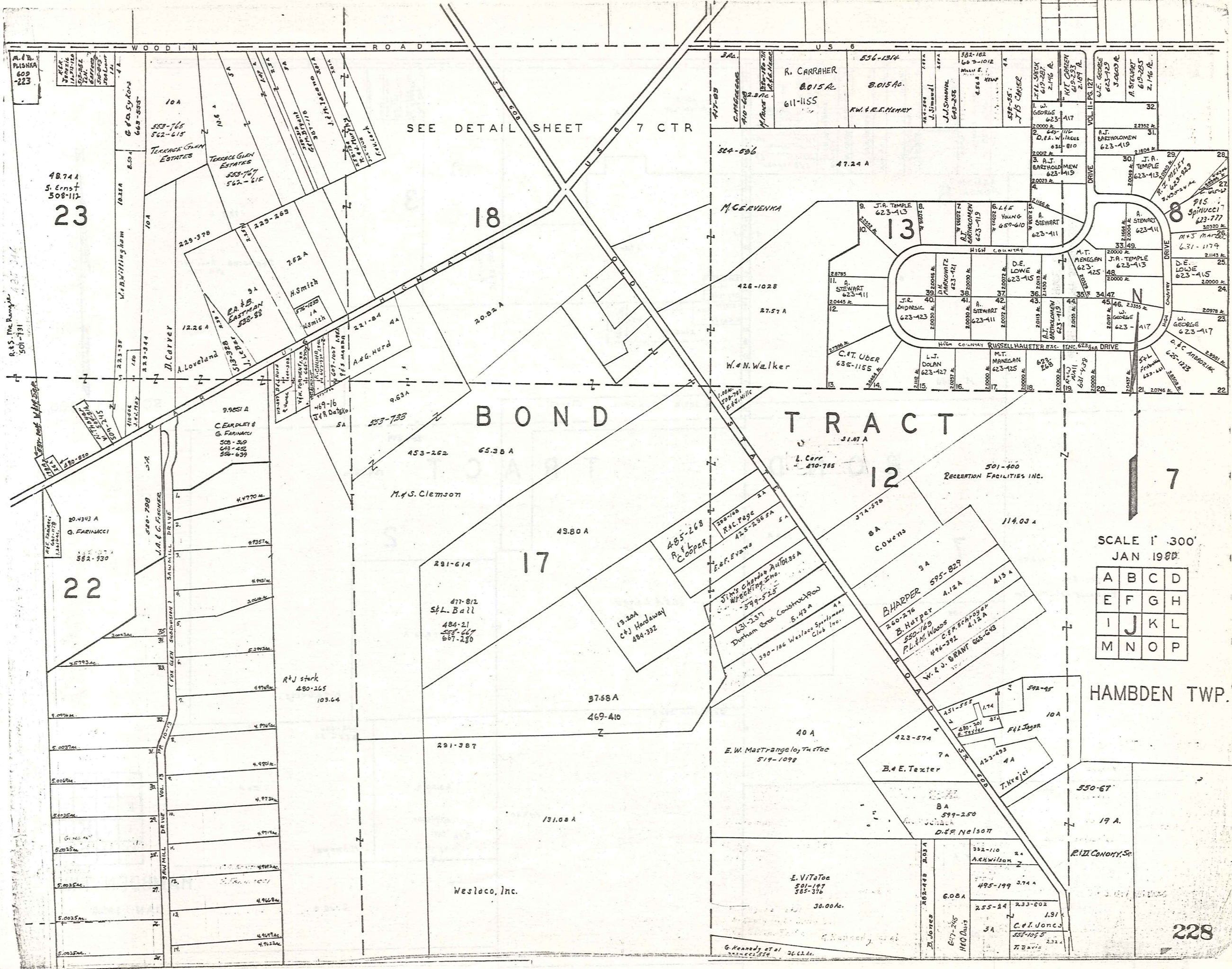


SCALE 1" = 300'  
 JAN. 1, 1981

A	B	C	D
E	F	G	H
I	J	K	L
M	N	O	P

HAMB DEN TWP.





SEE DETAIL SHEET 7 CTR

18

BOND

TRACT

7

48.741  
S. Ernst  
508-112  
23

22

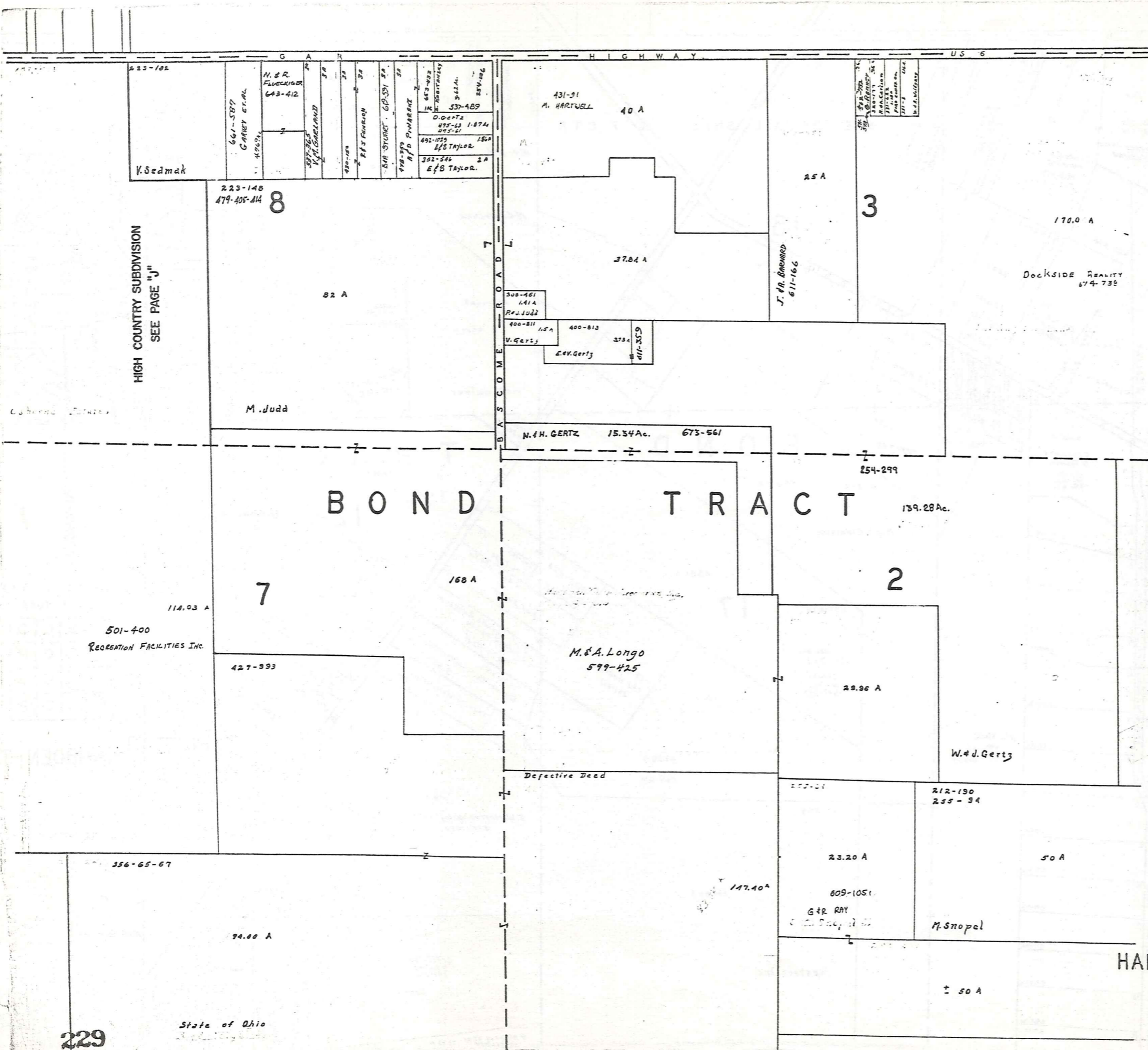
17

12

SCALE 1" = 300'  
JAN 1980

A	B	C	D
E	F	G	H
I	J	K	L
M	N	O	P

HAMBDEN TWP.



HIGH COUNTRY SUBDIVISION  
SEE PAGE "J"



SCALE 1" = 300'

BOND TRACT

A	B	C	D
E	F	G	H
I	J	K	L
M	N	O	P

HAMB DEN TWP.

JAN 1982

G A R HIGHWAY US 6

3

170.00A.

Dockside Realty  
879-708

BOND TRACT

R O A D  
T O W N  
S H I P  
L L E  
K  
M O N T  
V I L L E

647-495	5A.
D.M. & D.M. CRAWON	
430-952	4.98A.
R. & B. Grant	
R. & D. SUSTERIC	
657-261	4.98A.
R. & E. CROSBIE II	
657-263	4.98A.
263-201	
M. & J. Gardini	
251-219	
R. Kovacs	
460-398	4.98Ac.
M. & H. Tomezin	
460-480	4.98Ac.
210 Shelby	
621-411	4.98Ac.
424-826 880-177	
A. & M. Burnett	
H Berganski 477-502	4.98Ac.

2

212-170  
255-94

5.187Ac. C.W. Ballash  
486-507

50 A.

3.027Ac.

557-253  
CARLO, C., (INC)  
3.02A

M. Snopel

260-271

50 Ac.

S.W. Snopel



SCALE 1" = 300'

A	B	C	D
E	F	G	H
I	J	K	L
M	N	O	P

HAMB DEN TWP.  
JAN. 1981

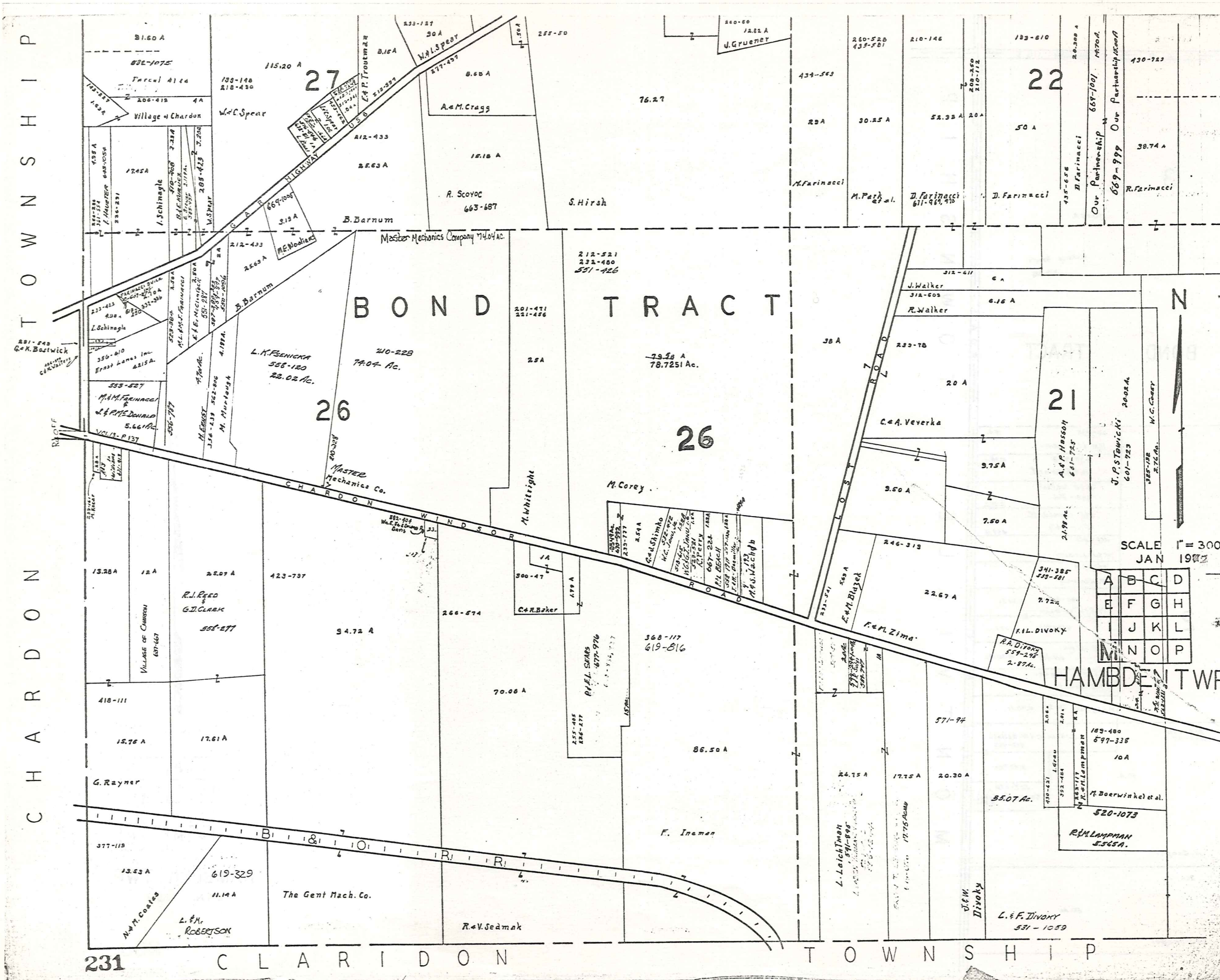
T O W N S H I P

C H A R D O N

231

C L A R I D O N

T O W N S H I P



# BOND TRACT

26

26

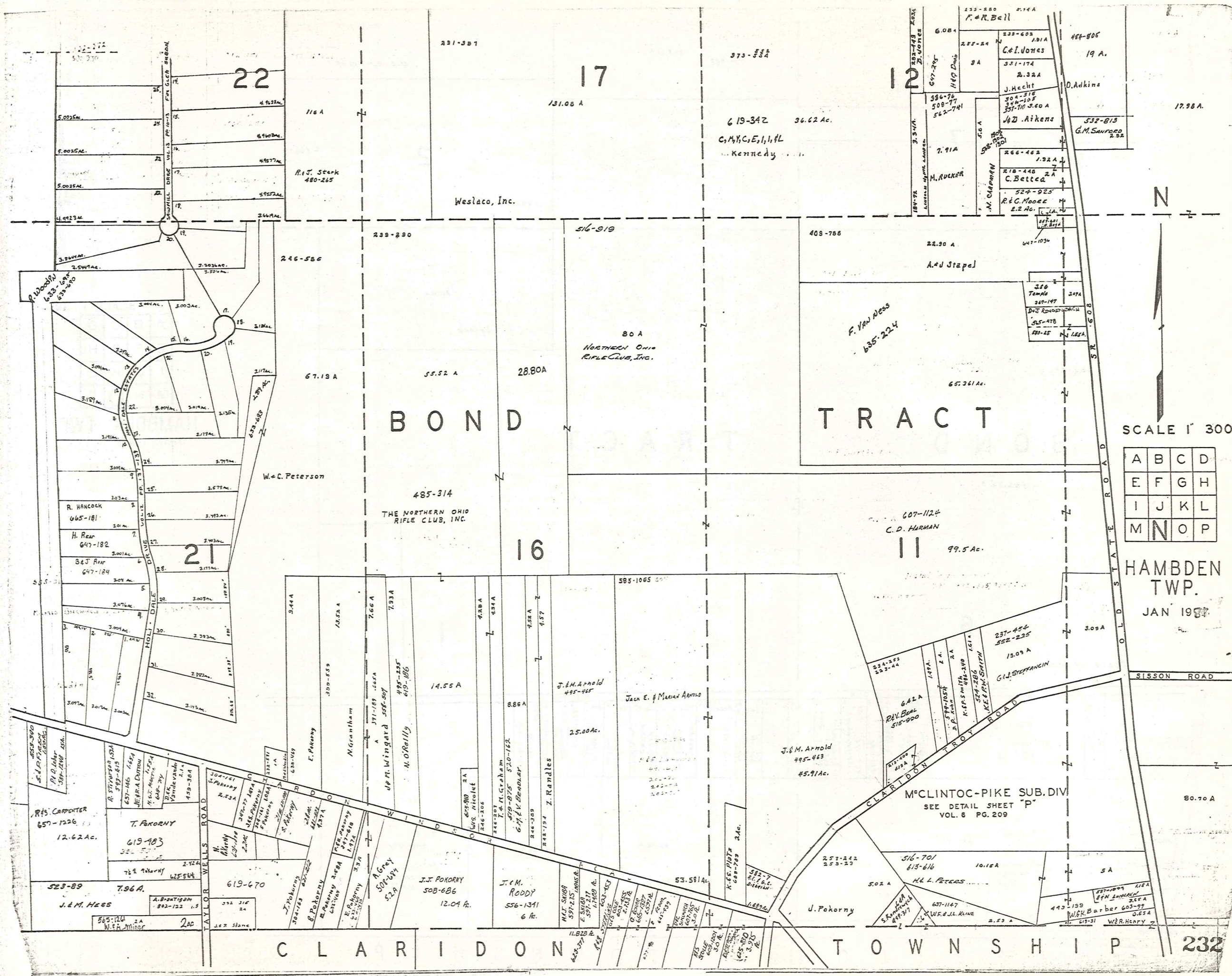
22

21

SCALE 1" = 300'  
JAN 1902

A	B	C	D
E	F	G	H
I	J	K	L
M	N	O	P

HAMBDEN TWP.



SCALE 1" = 300'

A	B	C	D
E	F	G	H
I	J	K	L
M	N	O	P

HAMB DEN TWP.  
JAN 1937

22

17

12

21

16

11

BOND

TRACT

CLARIDON TOWNSHIP

Weslaco, Inc.

80 A  
NORTHERN OHIO  
RIFLE CLUB, INC.

485-314  
THE NORTHERN OHIO  
RIFLE CLUB, INC.

F. VAN NESSE  
635-224

607-1124  
C. D. HARMAN

M'CLINTOC-PIKE SUB. DIV.  
SEE DETAIL SHEET "P"  
VOL. 6 PG. 209

P. WOODRUFF  
633-600  
633-600

R. HANCOCK  
645-181

H. REAR  
647-182

B. J. REAR  
647-184

R. S. CARPENTER  
657-1226

J. & M. HESS  
523-89

565-124  
W. S. MINOR

T. POKORNY  
619-403

762-900  
W. S. MINOR

565-124  
W. S. MINOR

619-670

J. J. POKORNY  
508-686

509-691

509-691

J. J. POKORNY  
508-686

509-691

509-691

509-691

J. J. POKORNY  
508-686

509-691

509-691

509-691

J. J. POKORNY  
508-686

509-691

509-691

509-691

J. J. POKORNY  
508-686

509-691

509-691

509-691

J. J. POKORNY  
508-686

509-691

509-691

509-691

J. J. POKORNY  
508-686

509-691

509-691

509-691

J. J. POKORNY  
508-686

509-691

509-691

509-691

J. J. POKORNY  
508-686

509-691

509-691

509-691

J. J. POKORNY  
508-686

509-691

509-691

509-691

J. J. POKORNY  
508-686

509-691

509-691

509-691

246-586

246-586

246-586

246-586

246-586

246-586

246-586

246-586

246-586

246-586

246-586

246-586

246-586

246-586

246-586

246-586

246-586

246-586

246-586

246-586

246-586

239-290

239-290

239-290

239-290

239-290

239-290

239-290

239-290

239-290

239-290

239-290

239-290

239-290

239-290

239-290

239-290

239-290

239-290

239-290

239-290

239-290

516-519

516-519

516-519

516-519

516-519

516-519

516-519

516-519

516-519

516-519

516-519

516-519

516-519

516-519

516-519

516-519

516-519

516-519

516-519

516-519

516-519

409-786

409-786

409-786

409-786

409-786

409-786

409-786

409-786

409-786

409-786

409-786

409-786

409-786

409-786

409-786

409-786

409-786

409-786

409-786

409-786

409-786

22.90 A

22.90 A

22.90 A

22.90 A

22.90 A

22.90 A

22.90 A

22.90 A

22.90 A

22.90 A

22.90 A

22.90 A

22.90 A

22.90 A

22.90 A

22.90 A

22.90 A

22.90 A

22.90 A

22.90 A

22.90 A

67.19 A

67.19 A

67.19 A

67.19 A

67.19 A

67.19 A

67.19 A

67.19 A

67.19 A

67.19 A

67.19 A

67.19 A

67.19 A

67.19 A

67.19 A

67.19 A

67.19 A

55.52 A

55.52 A

55.52 A

55.52 A

55.52 A

55.52 A

55.52 A

55.52 A

55.52 A

55.52 A

55.52 A

55.52 A

55.52 A

55.52 A

55.52 A

55.52 A

55.52 A

28.80 A

28.80 A

28.80 A

28.80 A

28.80 A

28.80 A

28.80 A

28.80 A

28.80 A

28.80 A

28.80 A

28.80 A

28.80 A

28.80 A

28.80 A

28.80 A

28.80 A

14.55 A

14.55 A

14.55 A

14.55 A

14.55 A

14.55 A

14.55 A

14.55 A

14.55 A

14.55 A

14.55 A

14.55 A

14.55 A

14.55 A

14.55 A

14.55 A

14.55 A

8.86 A

8.86 A

8.86 A

8.86 A

8.86 A

8.86 A

8.86 A

8.86 A

8.86 A

8.86 A

8.86 A

8.86 A

8.86 A

8.86 A

8.86 A

8.86 A

8.86 A

25.00 Ac.

25.00 Ac.

25.00 Ac.

25.00 Ac.

25.00 Ac.

25.00 Ac.

25.00 Ac.

25.00 Ac.

25.00 Ac.

2

336-65-67 94 A

927-993 147.40 A

260-271 80 A  
S. S. Hupel et al.

State of Ohio 17.98 A 7

2 260-274 ± 100 A

260-274

31.80 A  
A. P. Spisak

266-58

BOND

TRACT

562.34 A

6

State of Ohio



SCALE 1" = 300'

A	B	C	D
E	F	G	H
I	J	K	L
M	N	O	P

HAMB DEN TWP.  
JAN 1988

20 A

L	O	L	D	S I S S O N				R O A D					
				Lot	Acres	Vol. 6	Pg. 11	Lot	Acres	Vol. 6	Pg. 11		
251-93	532-115	30.71 A.	HT LANG	558-906	2.07	427-115	2.07	427-115	2.07	427-115	2.07	427-115	2.07
FLITTAF D. AMANDA	677-1228	2.01 Ac.	A. T. M. WALKER	558-906	2.07	427-115	2.07	427-115	2.07	427-115	2.07	427-115	2.07
552-165	2.04 A	631-332	80.70 A	558-906	2.07	427-115	2.07	427-115	2.07	427-115	2.07	427-115	2.07
L. M. CUREY	552-4-61	669-1027	1028	558-906	2.07	427-115	2.07	427-115	2.07	427-115	2.07	427-115	2.07
L. M. CUREY	552-4-61	J. K. MOBASSERI	671-905	558-906	2.07	427-115	2.07	427-115	2.07	427-115	2.07	427-115	2.07
L. M. CUREY	552-4-61	22.46 A	27.54 A	558-906	2.07	427-115	2.07	427-115	2.07	427-115	2.07	427-115	2.07
L. M. CUREY	552-4-61	S. TRUDICK	671-905	558-906	2.07	427-115	2.07	427-115	2.07	427-115	2.07	427-115	2.07
L. M. CUREY	552-4-61	50 A	508-1073	558-906	2.07	427-115	2.07	427-115	2.07	427-115	2.07	427-115	2.07
L. M. CUREY	552-4-61	611 6204	621-823	558-906	2.07	427-115	2.07	427-115	2.07	427-115	2.07	427-115	2.07
L. M. CUREY	552-4-61	667-252	667-252	558-906	2.07	427-115	2.07	427-115	2.07	427-115	2.07	427-115	2.07
L. M. CUREY	552-4-61	667-252	667-252	558-906	2.07	427-115	2.07	427-115	2.07	427-115	2.07	427-115	2.07
L. M. CUREY	552-4-61	667-252	667-252	558-906	2.07	427-115	2.07	427-115	2.07	427-115	2.07	427-115	2.07

C L A R I D O N T O W N S H I P

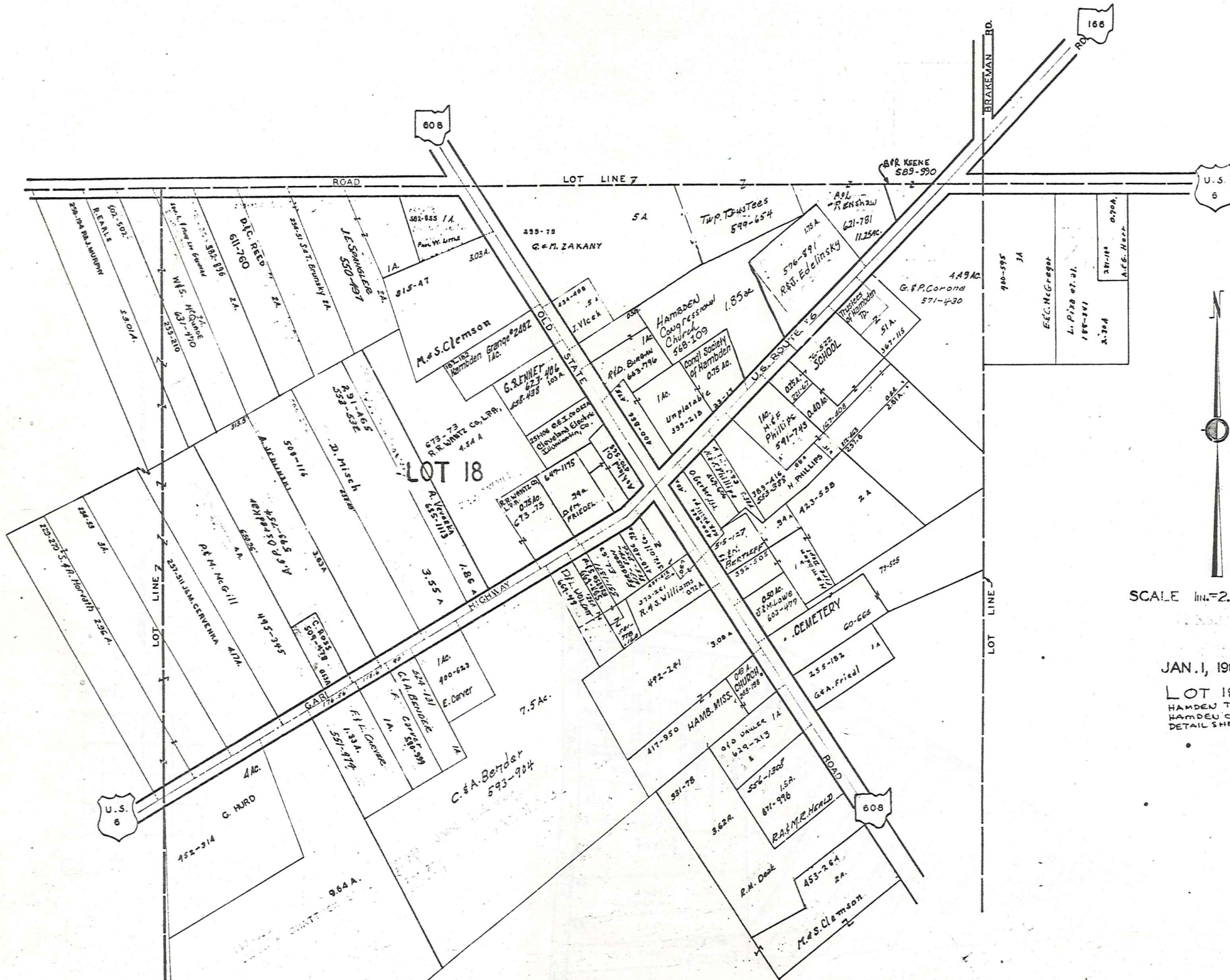
233  
R. C. ILLIOTT  
60-100  
819-963 S.A.  
491854



HAMB DEN CENTER  
AND VICINITY

# HAMB DEN TP.

HAMB DEN CENTER  
AND VICINITY



SCALE 1 in. = 2.5 Ch or 16 Dm.

JAN. 1, 1905

LOT 18  
HAMB DEN TWP.  
HAMB DEN CENTER  
DETAIL SHEET 7 CTR.

# Explanation and Use Sheet for Geauga County, Ohio

SAMPLE (PARTIAL) COUNTY INDEX MAP



- Township Boundary
- Township Name
- Village Boundary
- Village Name
- Tract Lot Number
- Street Name
- Acreage
- Deed Book & Page
- Owners Name
- Denotes Continous Ownership

SAMPLE (PARTIAL) MAP PAGE



- Map Page Number
- Village Name
- Village Boundary
- Township Name

SAMPLE (PARTIAL) MUNICIPALITY INDEX MAP



- Street Name
- Village Name
- Township Name

## USE OF THE MAP VOLUME

1. LOCATE THE GENERAL AREA OF INTEREST ON THE COUNTY INDEX MAP, ATLAS PAGE 'B', AND NOTE THE MUNICIPALITY NAME (TOWNSHIP OR VILLAGE).
2. REFER TO THE TABLE OF CONTENTS, ATLAS PAGE 'C', AND NOTE THE BEGINNING ATLAS PAGE NUMBER FOR THE MUNICIPALITY OF INTEREST.
3. TURN TO THE PAGE INDICATED. ON THIS PAGE WILL APPEAR AN INDEX MAP FOR THAT MUNICIPALITY.
4. LOCATE THE GENERAL AREA OF INTEREST AND NOTE THE MAP PAGE NUMBER. THIS MAY BE EITHER A LETTER OR A NUMBER.
5. MAP PAGES ARE IN ALPHABETICAL (OR NUMERICAL) SEQUENCE FOLLOWING THE MUNICIPALITY INDEX MAP. FOLLOW SEQUENCE TO THE MAP PAGE INDICATED.
6. LOCATE SPECIFIC PARCEL OF INTEREST AND NOTE THE DESIRED INFORMATION.

NOTE: ON SOME MAPS YOU MAY BE REFERRED TO A DETAIL SHEET SHOWING AN ENLARGEMENT OF THE AREA. THESE MAPS ARE FOUND AT THE END OF THE REGULAR MAP PAGES IN EACH MUNICIPALITY IN EITHER ALPHABETICAL OR NUMERICAL SEQUENCE.

NOTE: CHARDON VILLAGE HAS TITLE SHEETS. TO LOCATE OWNERS NAME, NOTE THE PARCEL NUMBER, REFER TO THE TITLE PAGE FOLLOWING THE MAP OF INTEREST, FOLLOW NUMERICAL SEQUENCE TO THE PARCEL NUMBER OF INTEREST AND NOTE THE DESIRED INFORMATION. IN ALL OTHER MUNICIPALITIES THE OWNERS NAME APPEARS ON THE MAP PAGE.

This book is the property of REAL ESTATE DATA, INC. and is distributed by REDI under a leasing arrangement requiring return to REDI upon termination of the lease. REDI reserves the right to reclaim this book if found in the possession of any firm or person where possession was obtained through any unauthorized source.